

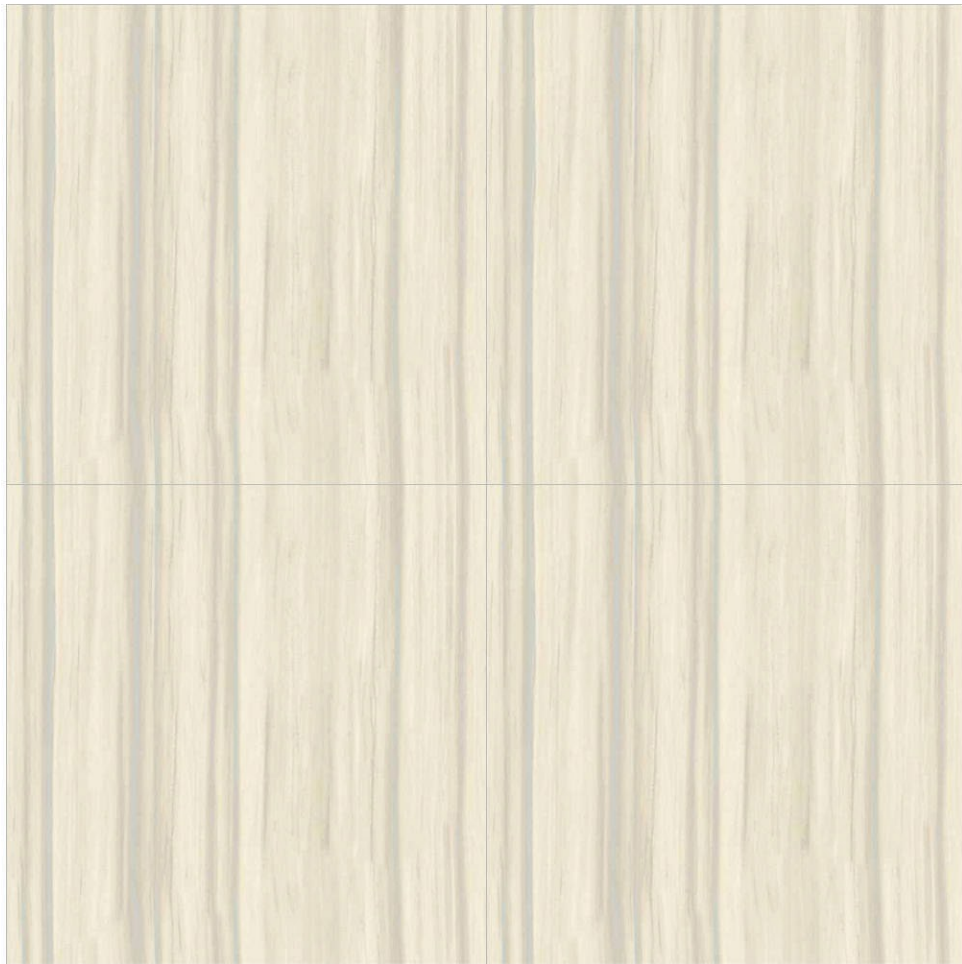
600x
600 mm
VITRIFIED TILES



VITRIFIED TILES
NANO
TECHNOLOGY



PRIME Collection
600x600mm.
Premium Polished Vitrified Tiles



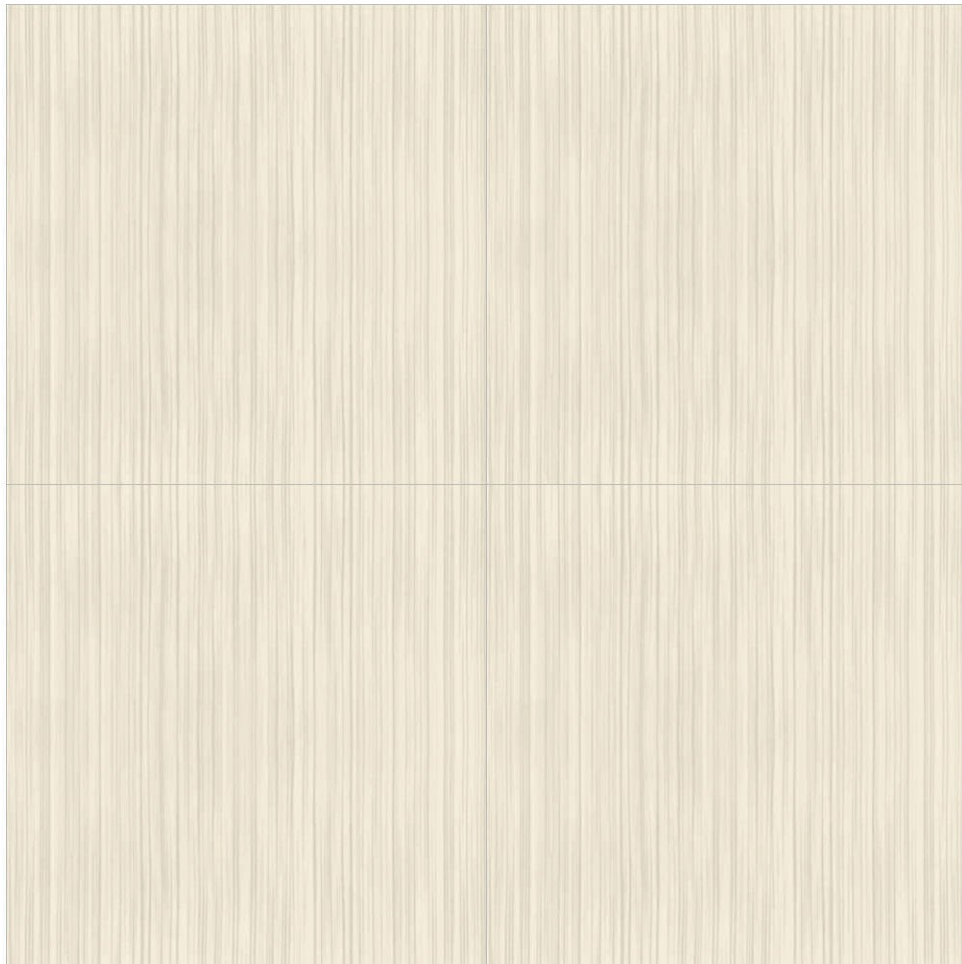
LOPEZ





SOLO WOOD





LINER WOOD





ALPINE WOOD





NATURAL WOOD





FEATHER





GALAXY BLUE





SOLO FEATHER





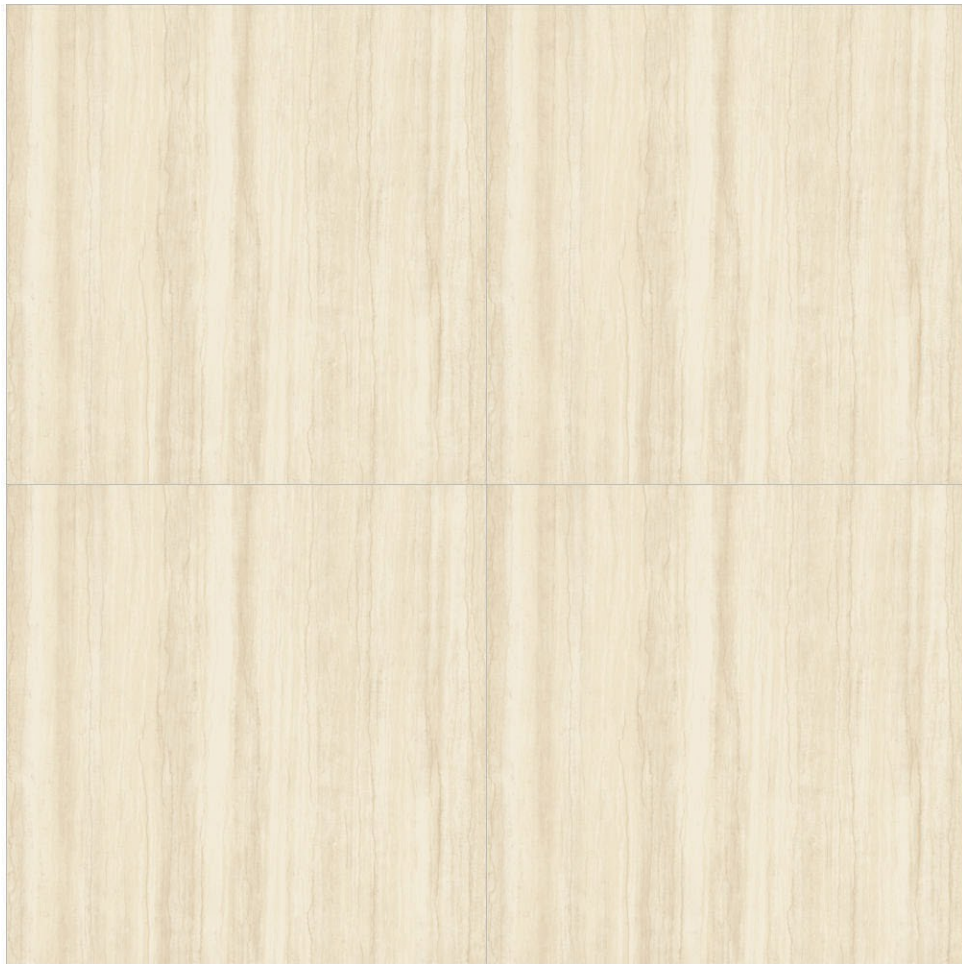
OCEAN MARBLE





MAPLE MARBLE





RIPPLE





FLORENTINO





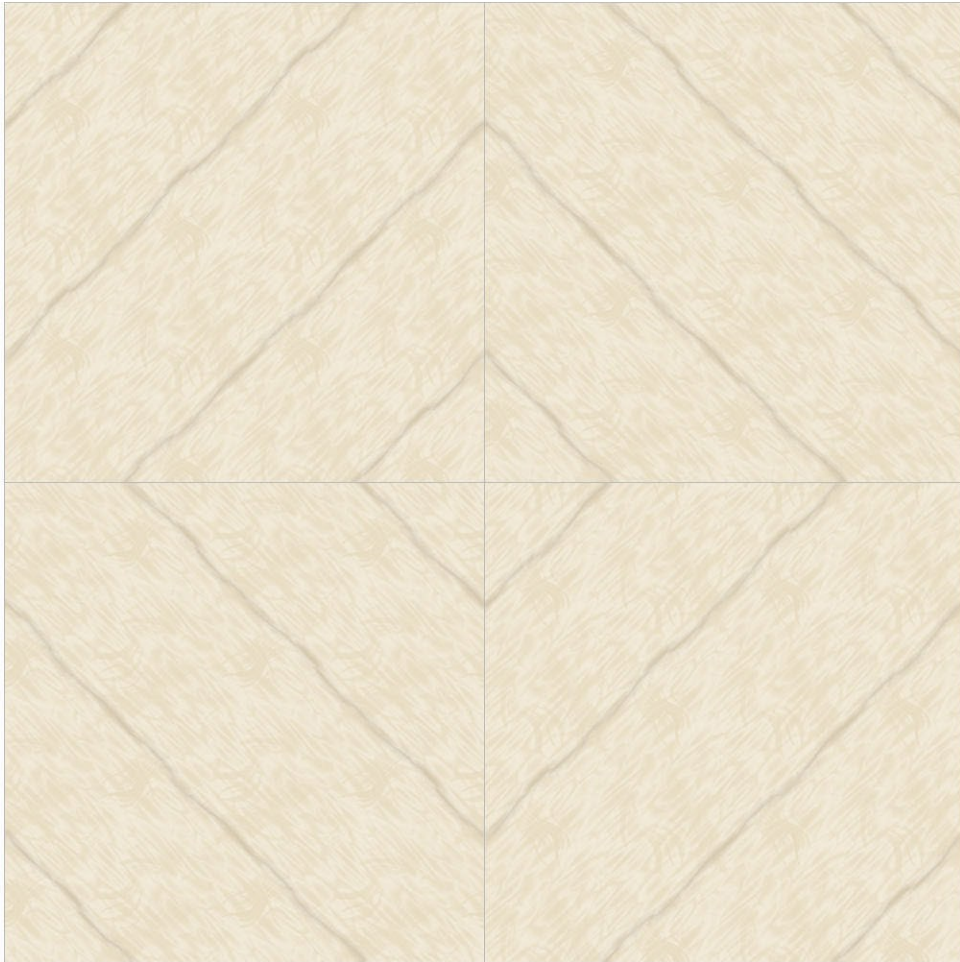
CADBURY





SOLOSTICK





LEZARO





DILISO





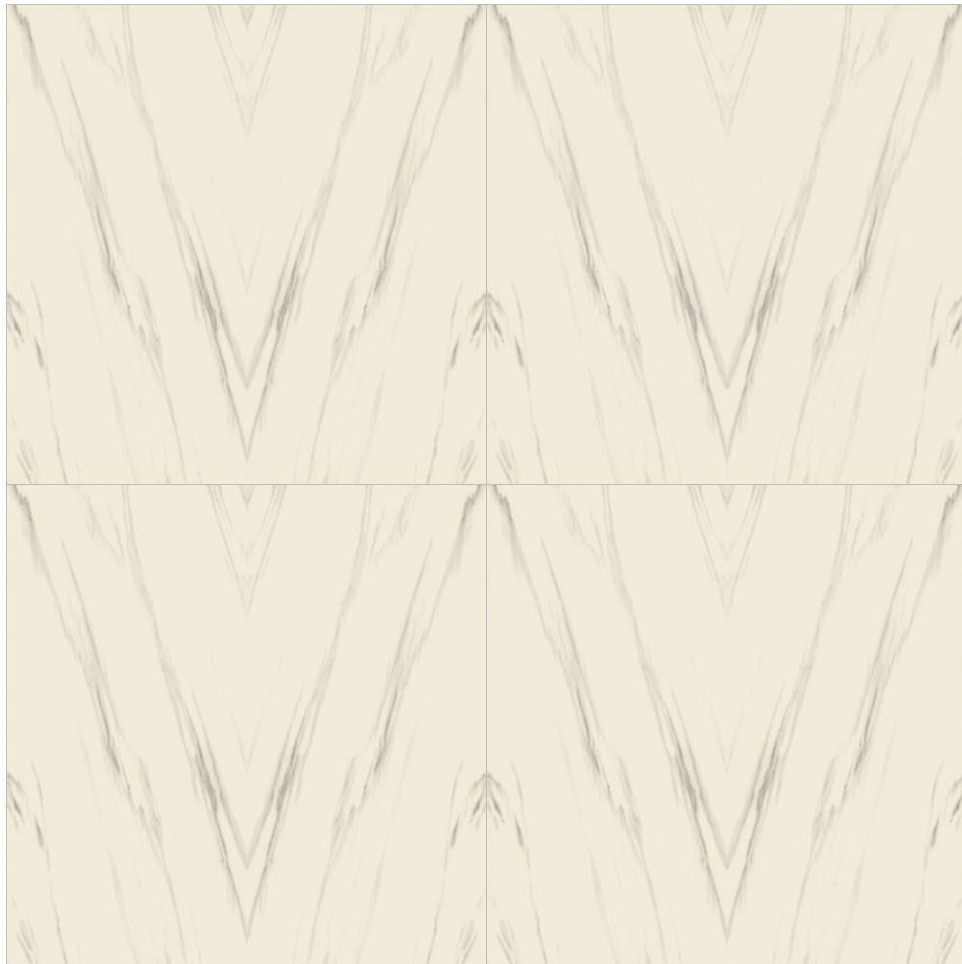
ORCHID





SUZLON





SOLOYA





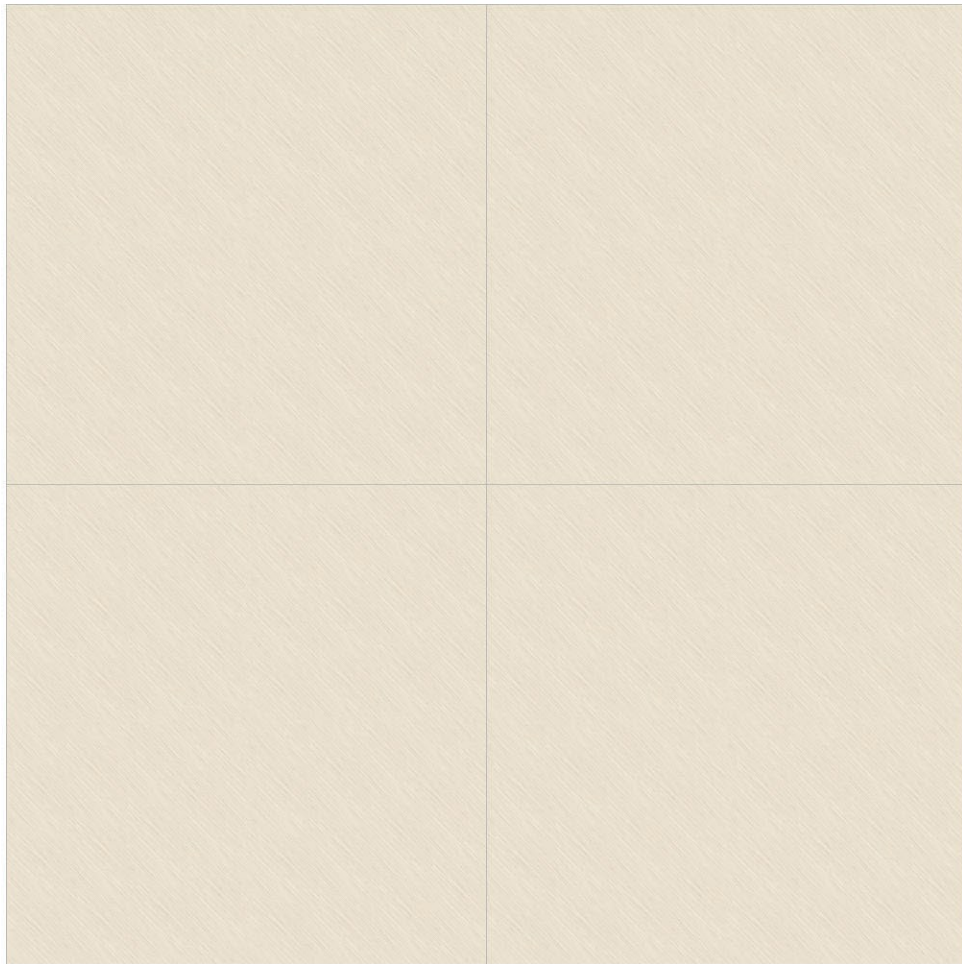
FUSION





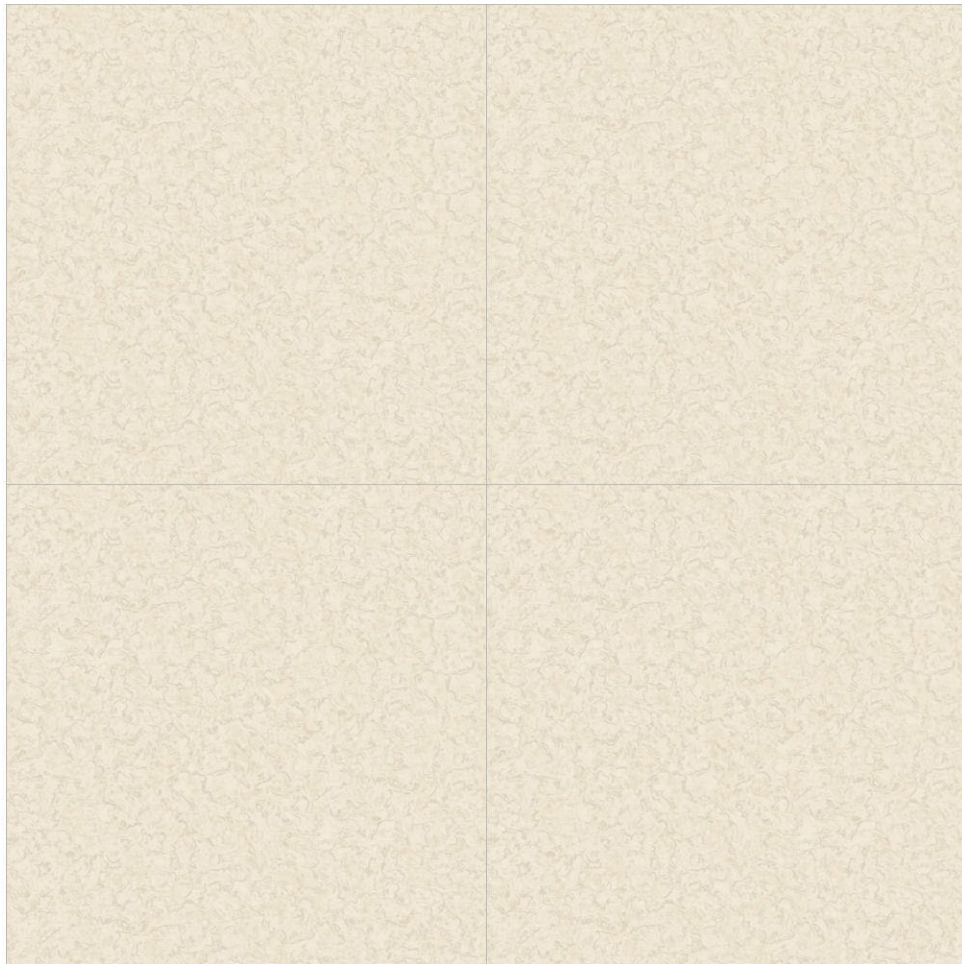
OCEAN





STRIP





SENTO



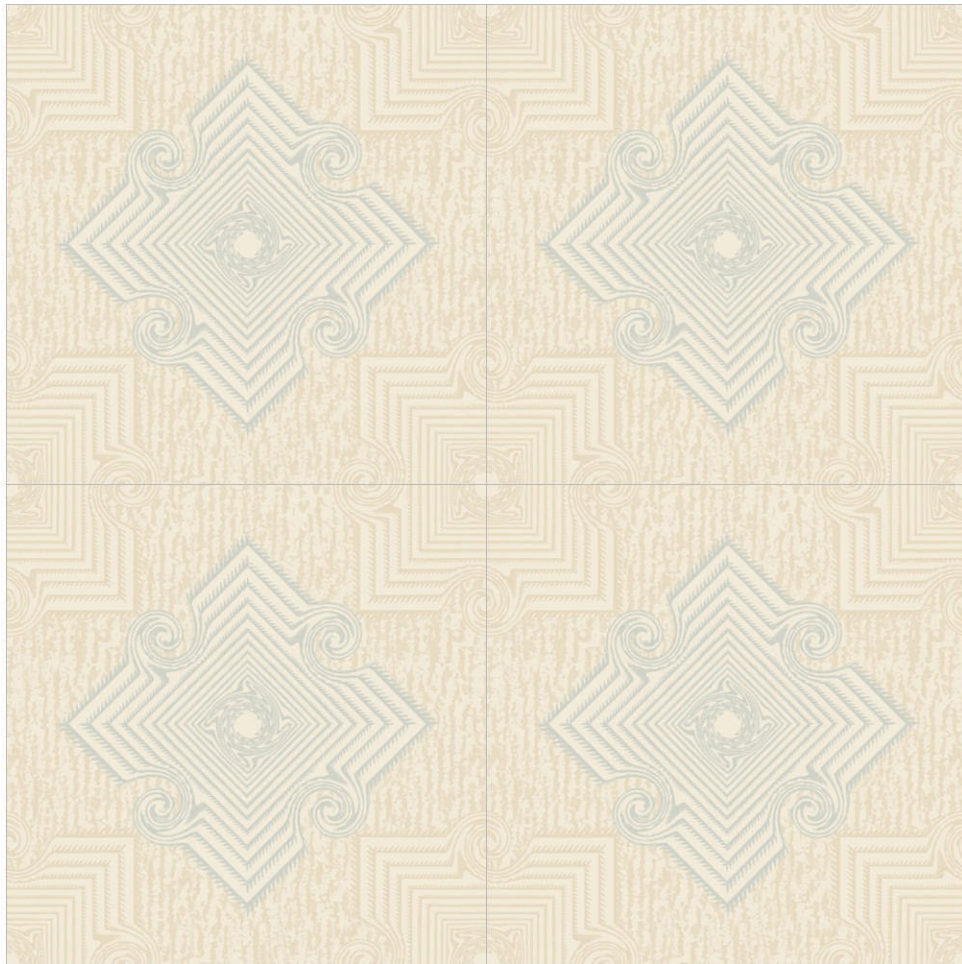


PRIME Collection
600x600mm.
Premium Polished Vitrified Tiles



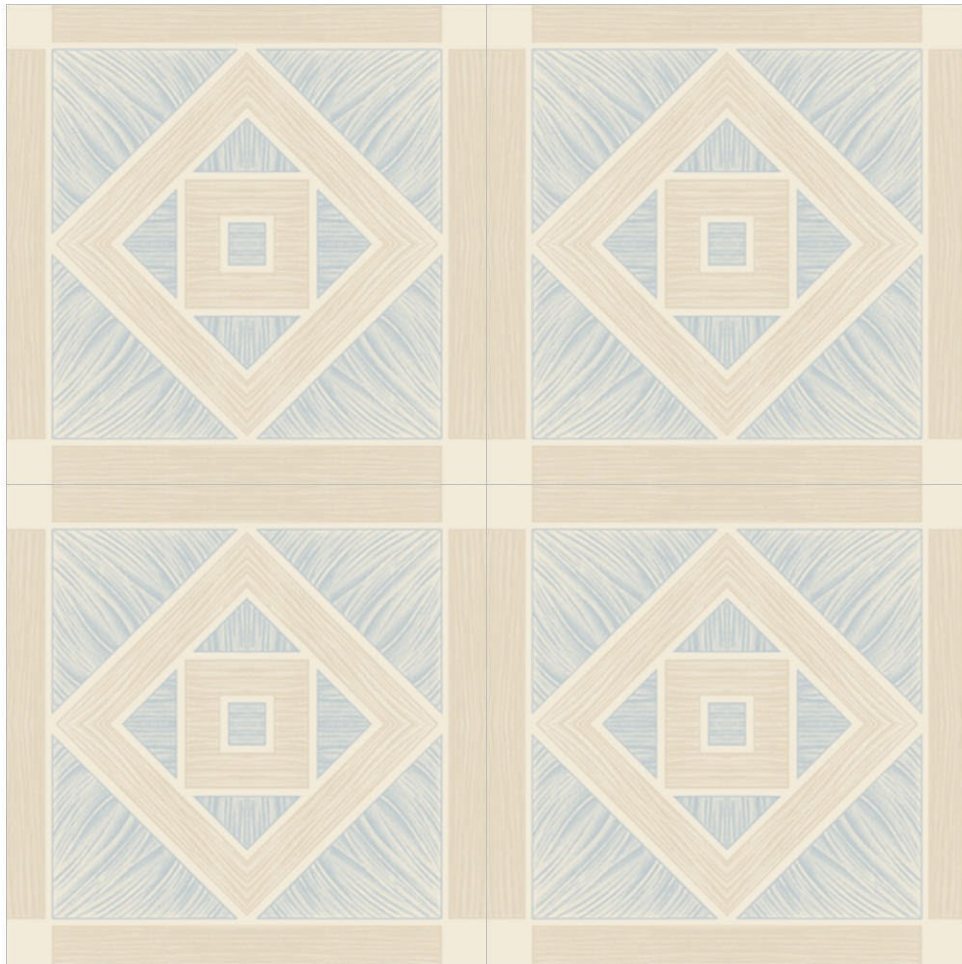
DAYNA





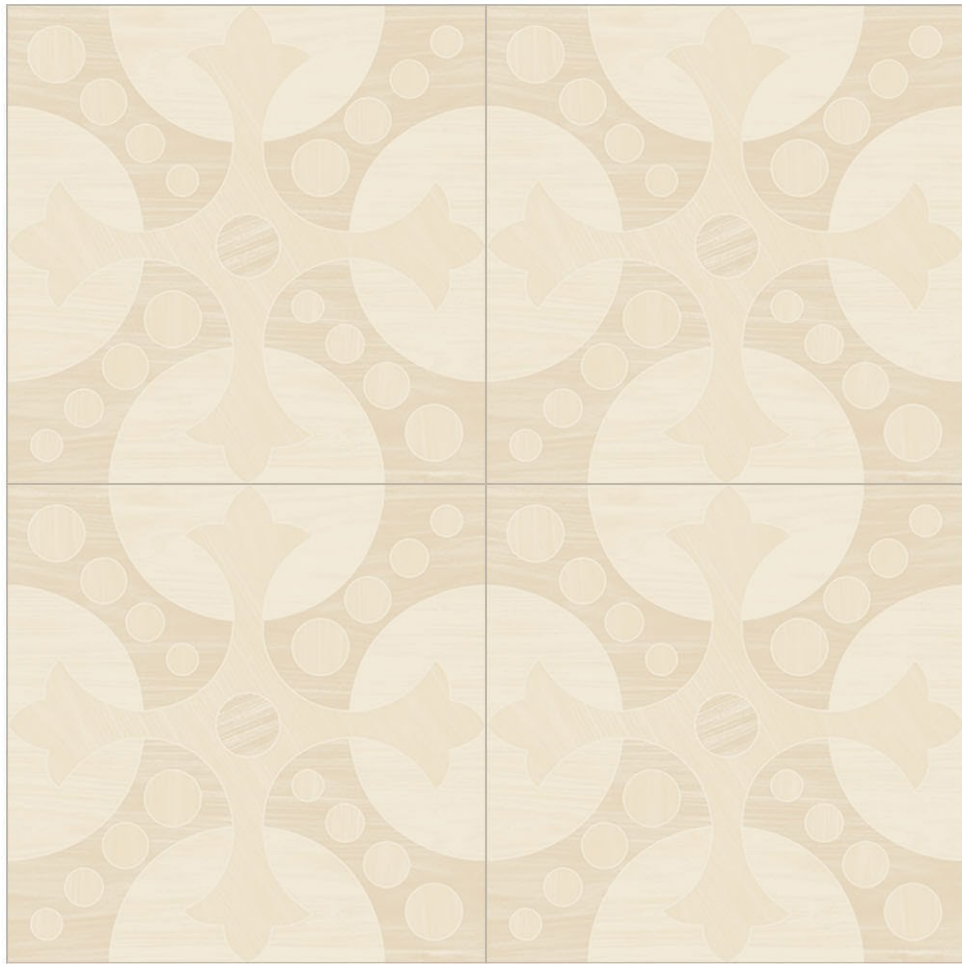
AMAZON





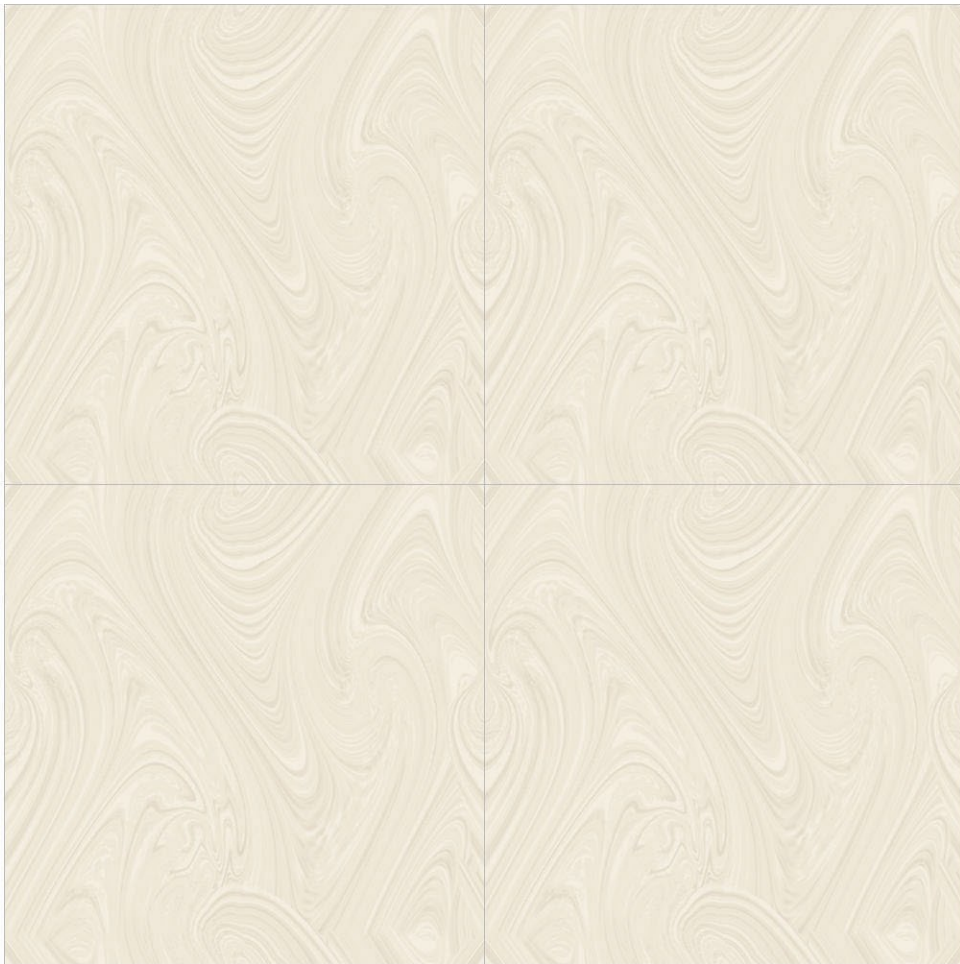
CARPET





COCONATE





RADO





TOPAZ





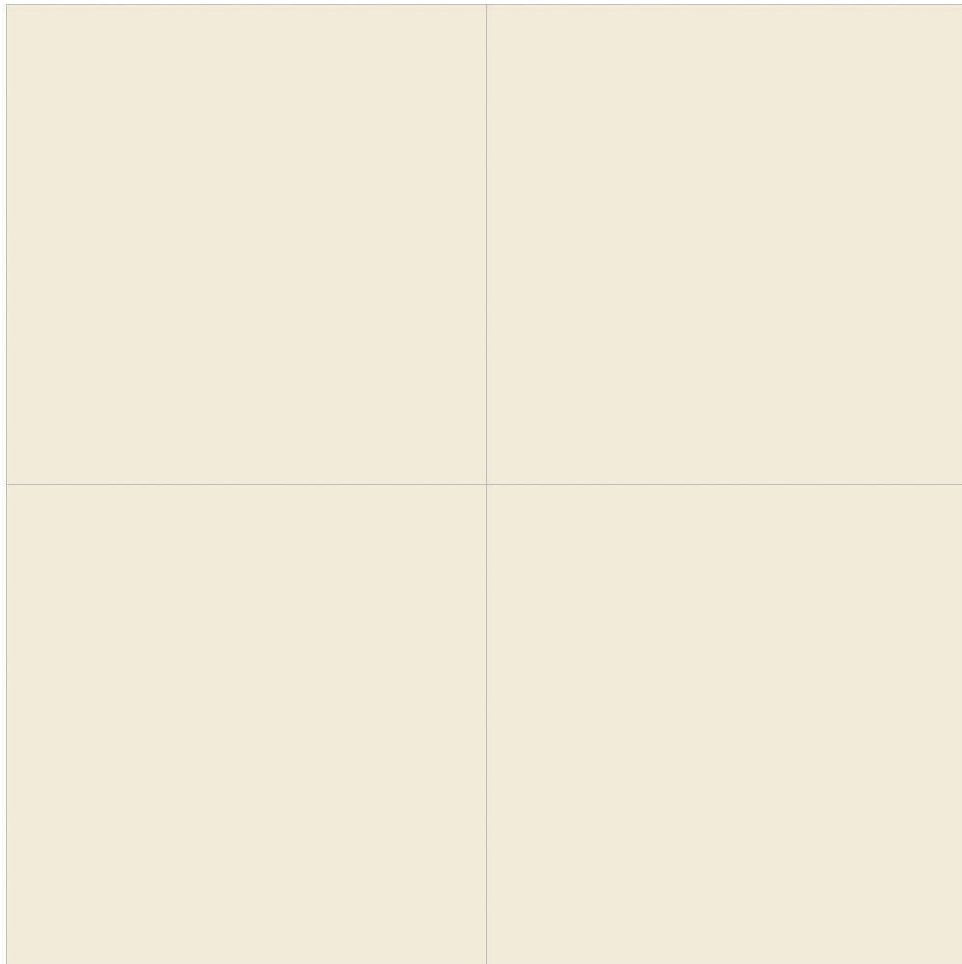
BANKTOP





ROSATA





IVORY



TECHNICAL ASPECTS

| No. | CHARACTERISTICS | VITRIFIED TILES ISO 13006/EN 176 Group Bla | | METHOD OF TESTING |
|-----|--|---|---------------------------|-------------------|
| 1 | Deviation in Length | + /-0.6 % | + /-0.1 % | EN 98 |
| 2 | Deviation in Thickness | + /-0.5 % | + /-0.1 % | EN 98 |
| 3 | Straightness of Sides | + /-0.5 % | + /-0.1% | EN 98 |
| 4 | Rectangularity | + /-0.6 % | + /-0.2 % | EN 98 |
| 5 | Surface Flatness | + /-0.5 % | + /-0.2 % | EN 98 |
| 6 | Water Absorption* | + /-0.5 % | < 0.03 % | EN 99 |
| 7 | Mohs Hardness * | < 6 | < 8 | EN 101 |
| 8 | Flexural Straightness * | > 27 N / mm ² | > 47 N / mm ² | EN 100 |
| 9 | Abrasion Resistance | < 204 mm ³ | < 144 mm ³ | EN 102 |
| 10 | Skid Resistance (Friction Coefficient) | > 0.4 | > 0.6 | ASTM C-1028 |
| 11 | Breaking Strength * | 1113 N | 2830 N | ASTM C-648 |
| 12 | Density (Gm/cc) | > 2 gm/cc | 2.4 | DIN 51082 |
| 13 | Frost Resistance | Frost Proof | Frost Proof | EN 202 |
| 14 | Chemical Resistance | No Damage | No Damage | EN 106 |
| 15 | Thermal Shock Resistance | No Damage | No Damage | EN 104 |
| 16 | Colour Resistance | No Damage | No Damage | DIN 51094 |
| 17 | Thermal Expansion | < 9x10 ⁻⁶ max | < 6x10 ⁻⁶ max | EN 102 |
| 18 | Stain Resistance | Resistant | Resistant | ISO 10545-14 |
| 19 | Moisture Expansion | Nil | Nil | ISO 10545-10 |
| 20 | Glossiness | - | Min 65 % - 70% Reflection | Glossometer |
| 21 | Nano Glossiness | - | Min 90 % - 93% Reflection | Glossometer |

PACKING DETAIL

| SIZE | THICKNESS | NO. OF TILES PER BOX | COVERAGE AREA | WEIGHT PER BOX |
|-----------|---------------|-------------------------|---------------|----------------|
| 600x600mm | 8.5 mm Approx | 4 Pieces | 15.50 Sq. Ft. | 27 Kgs. Approx |

APPLICATIONS



DISCLAIMER : We reserves the right to delete & amend either totally or partially, and of the colours, shapes, size, references and other technical specification contain in catalogue at any time. the colours shown of tiles in this catalogue are purely illustrative and limited to printing process. Please refer actual sample final selection. The details of colours, size, references should be vitrified for Typographical errors. SHADE & SIZE VARIATIONS are inherent characteristics of ceramics. NO COMPLIANT SHALL BE SHALL ENTERTAINED ON TILES ALREADY LAID/FIXED.